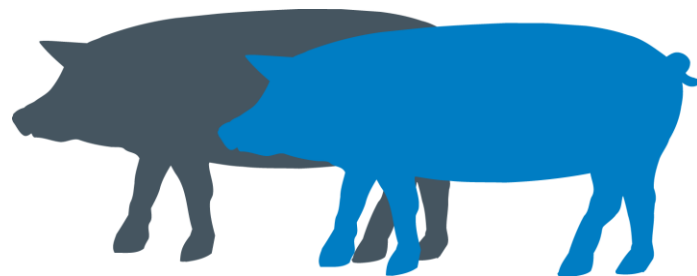


LungVember 2024 – Mycoplasma hyopneumoniae Svinevet Årsmøde

Svinevet

Professionel svinerådgivning

Clara M. Paulsen, Svinedyrlæge, Svinevet
Michael A. Larsen, Svinedyrlæge, Ceva



LungVember 2024

- What is the purpose:
 - more focus on healthy lungs at slaughterpigs to improve production and thriftiness
- Why is it important? More healthy lungs:
 - More growth per day
 - Less feed usage
- LungVember is performed in cooperation between Ceva, Pigvets, laboratorium in Kjellerup and slaughter houses.

LungVember is based on Ceva Lung Program (CLP)



SvineVet
Professionel svinerådgivning



LungVember 2023 and 2024

	2023	2024
Lungvember		
Number of herds	65	72
Number of set of lungs 65/72	1854	2150
Number of set of lungs pr. herd	28,5	29,9

Which lung diseases are relevant?

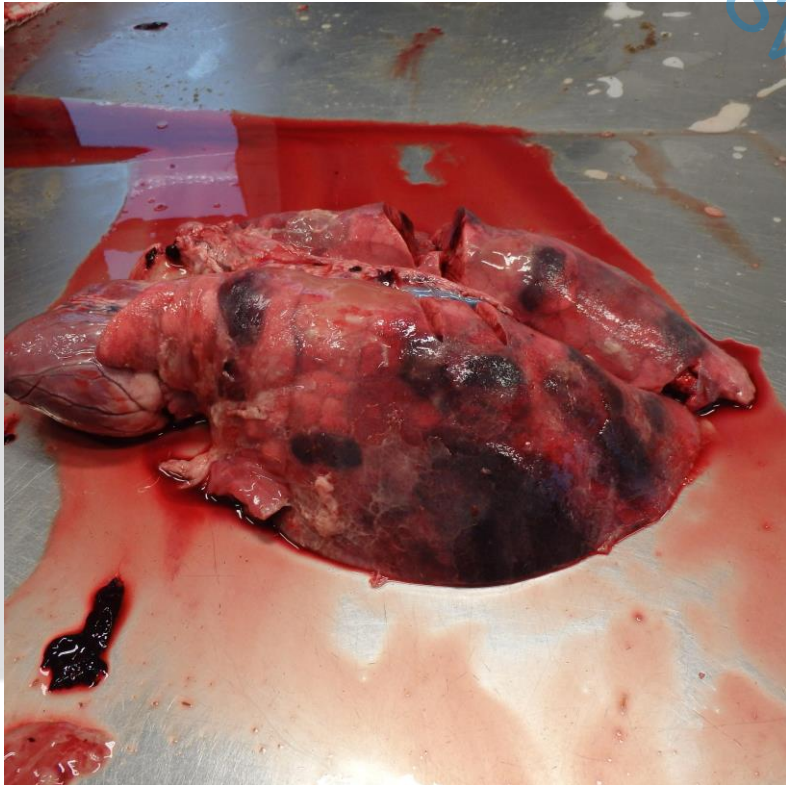
Virus disease



- PRRS
- PCV2
- These two viruses enhance the damage in the lungs caused by bacteria

Which lung diseases are relevant?

Ondartet lungesygge



- Ap lungesyge
- Actinobacillus pleuropneumoniae
- APP
- AP



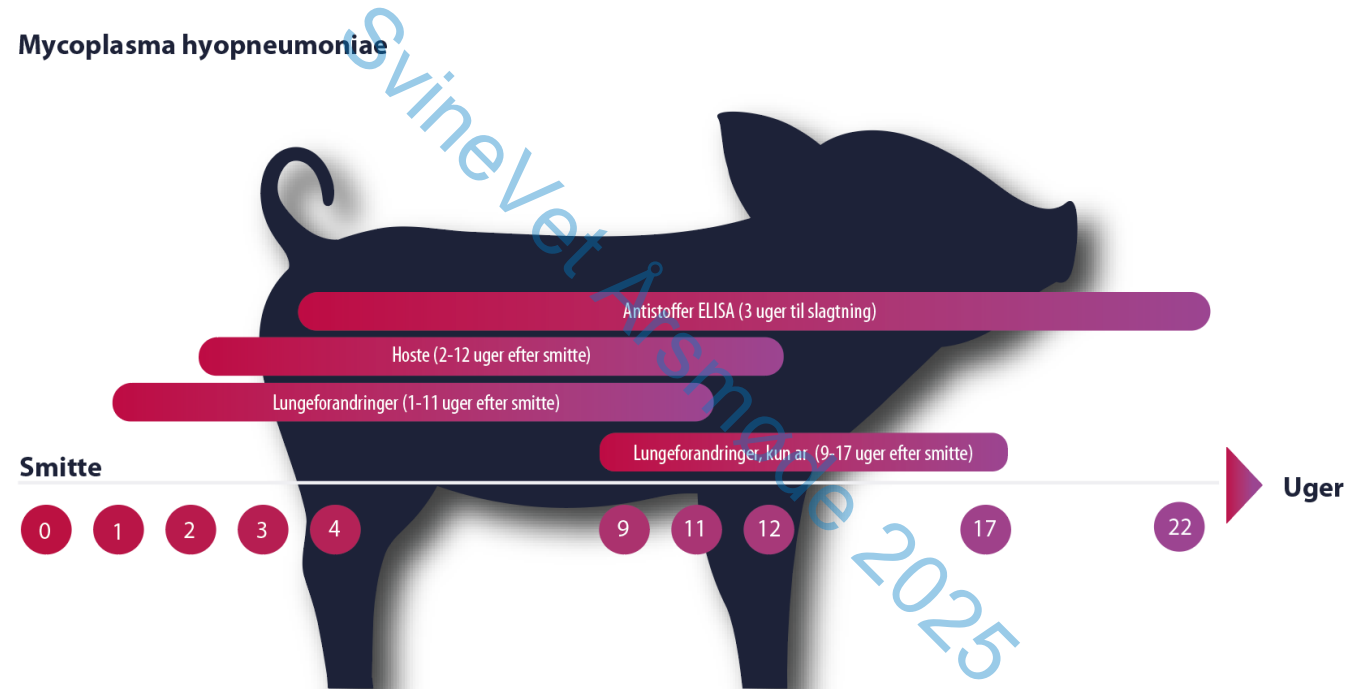
Which lung diseases are relevant?

Almindelig lungesyge



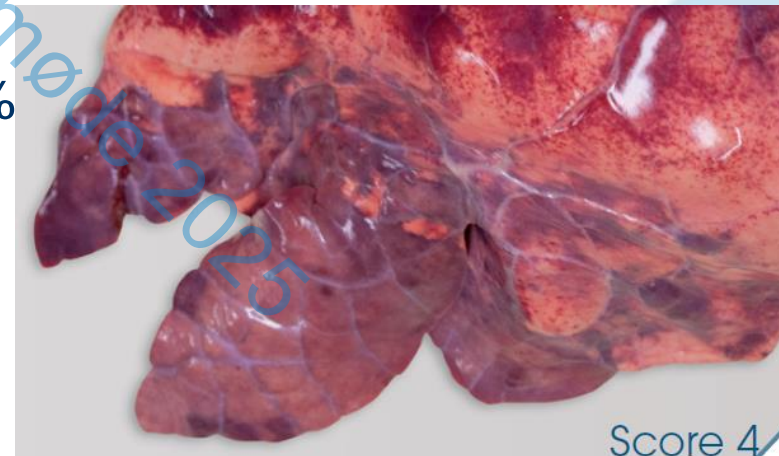
- Enzootisk pneumoni
- Mykoplasma lungesyge
- Mycoplasma hyopneumoniae
- **Mycoplasma**

Development in number of weeks after Mycoplasma infection of the slaughterpig



Kobisch et al 1993

Mycoplasma like lesions are scored for every 7 lobes of each set of lungs



Ceva Lunge Program (CLP) Mycoplasma like lesions

13.00 ons. 19. aug. 987654321 Michael Albin Larsen 35%

← Back

LA 0 RA 0 CP 0
1 2 1 2 0
3 4 3 4 1

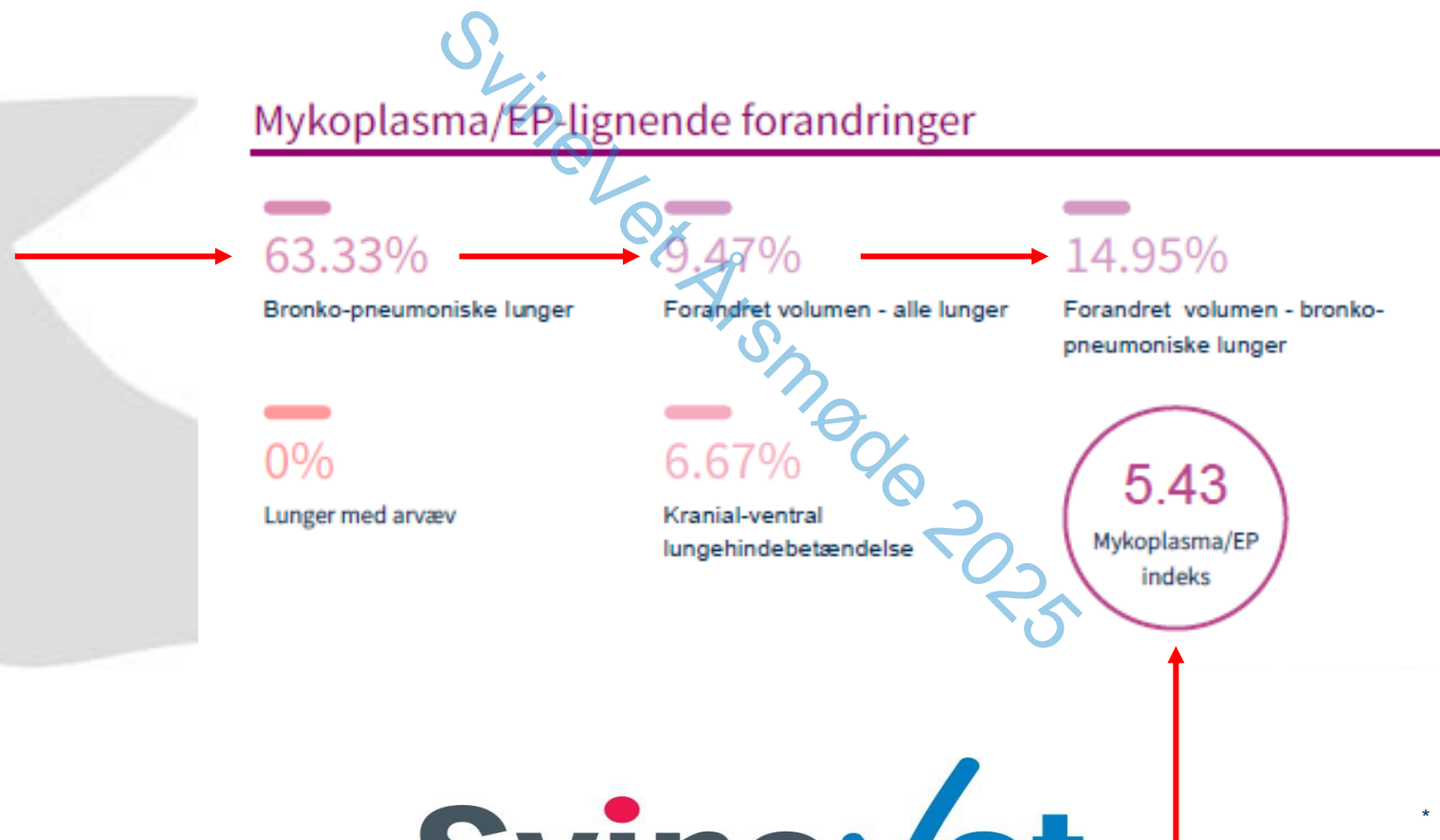
DCP 0
2
3
4

LC 0 INT 0 RC 0 DG 0
1 2 1 2 0 1
3 4 3 4 1

LD 0 RD 0 SCAR 0
1 2 1 2 0
3 4 3 4 1

⋮ Lung list Previous LUNG1/1 Next Report

CLP Rapport – The 2. most unhealthy herd with Mycoplasma in LungVember 2024



Mycoplasma index benchmark

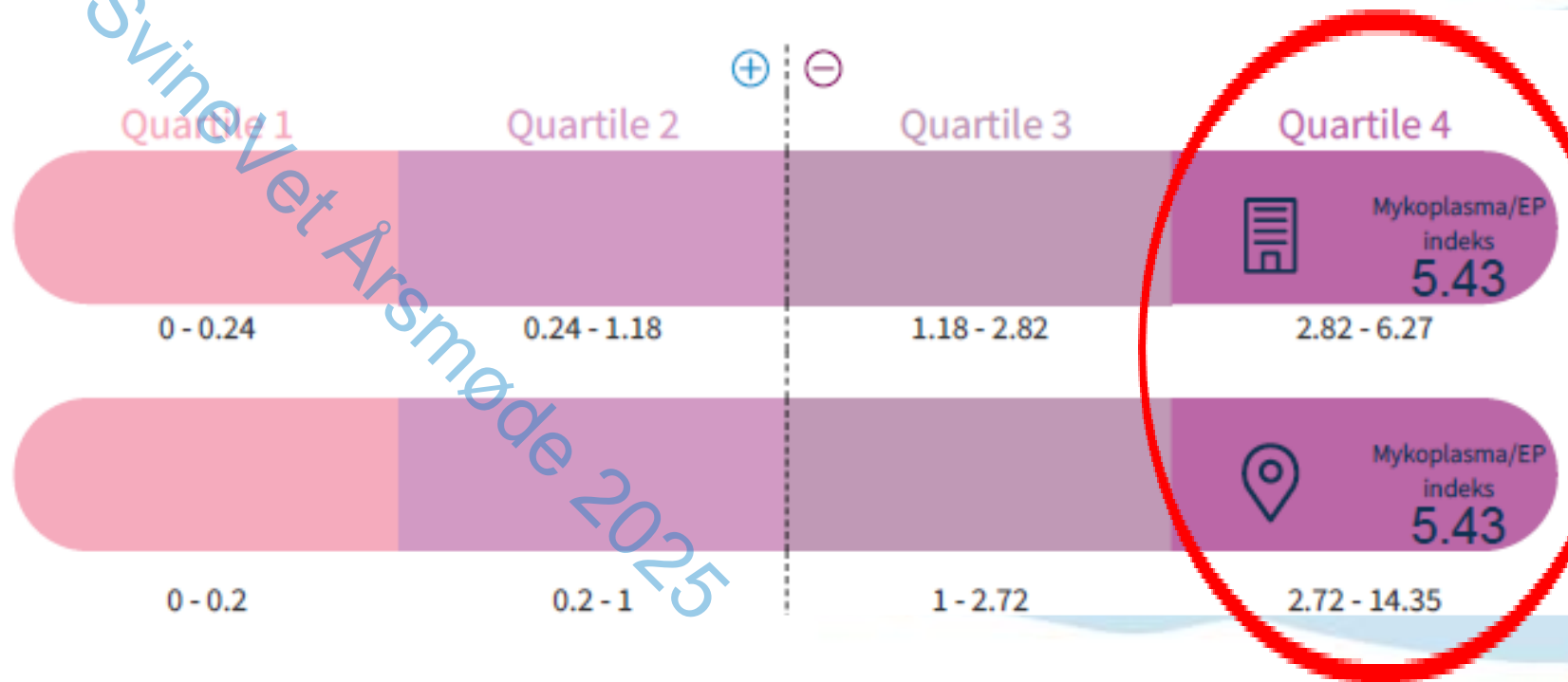
Mykoplasma/EP-indeks benchmark



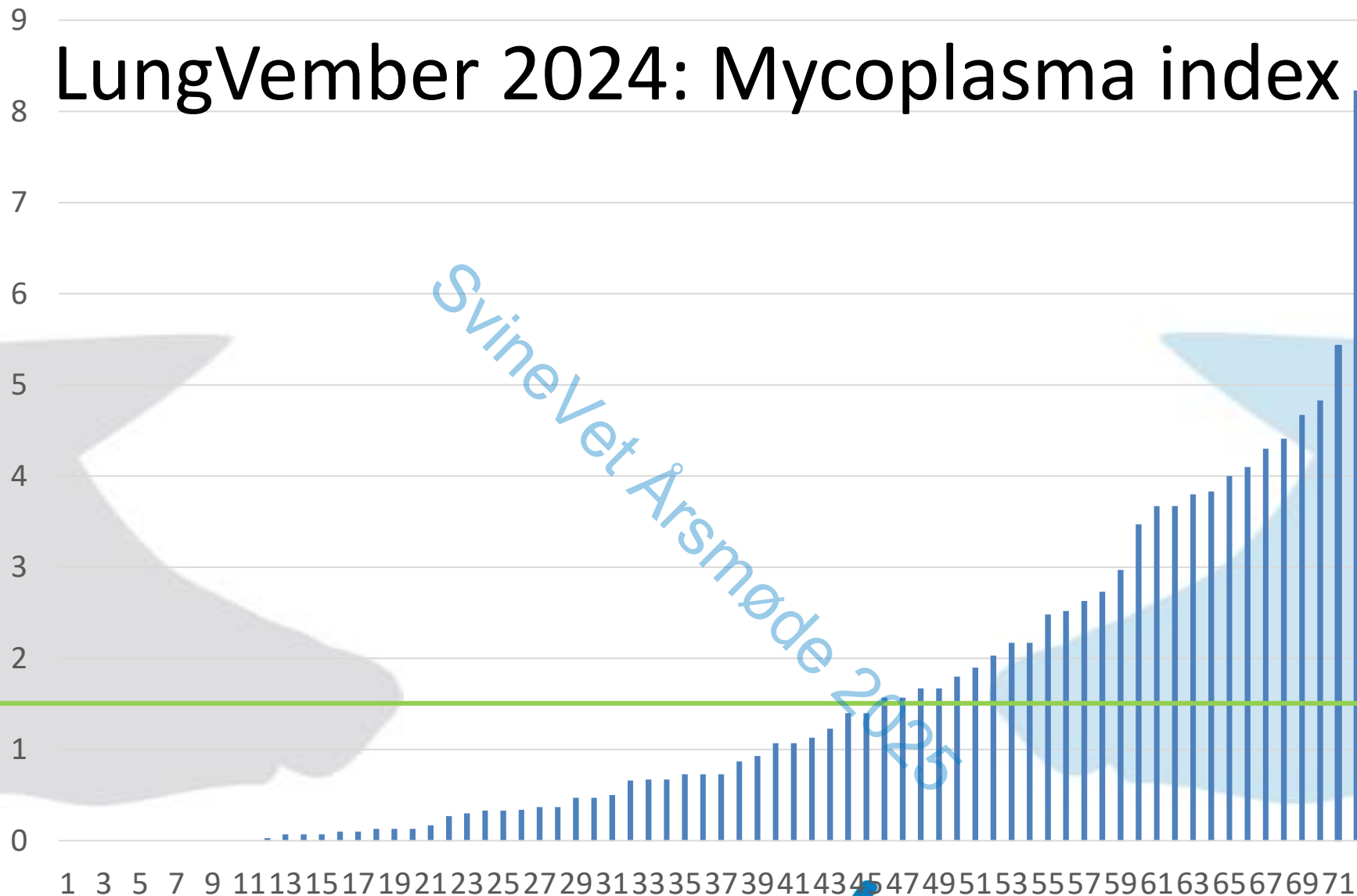
Praksis
Mykoplasma/EP indeks



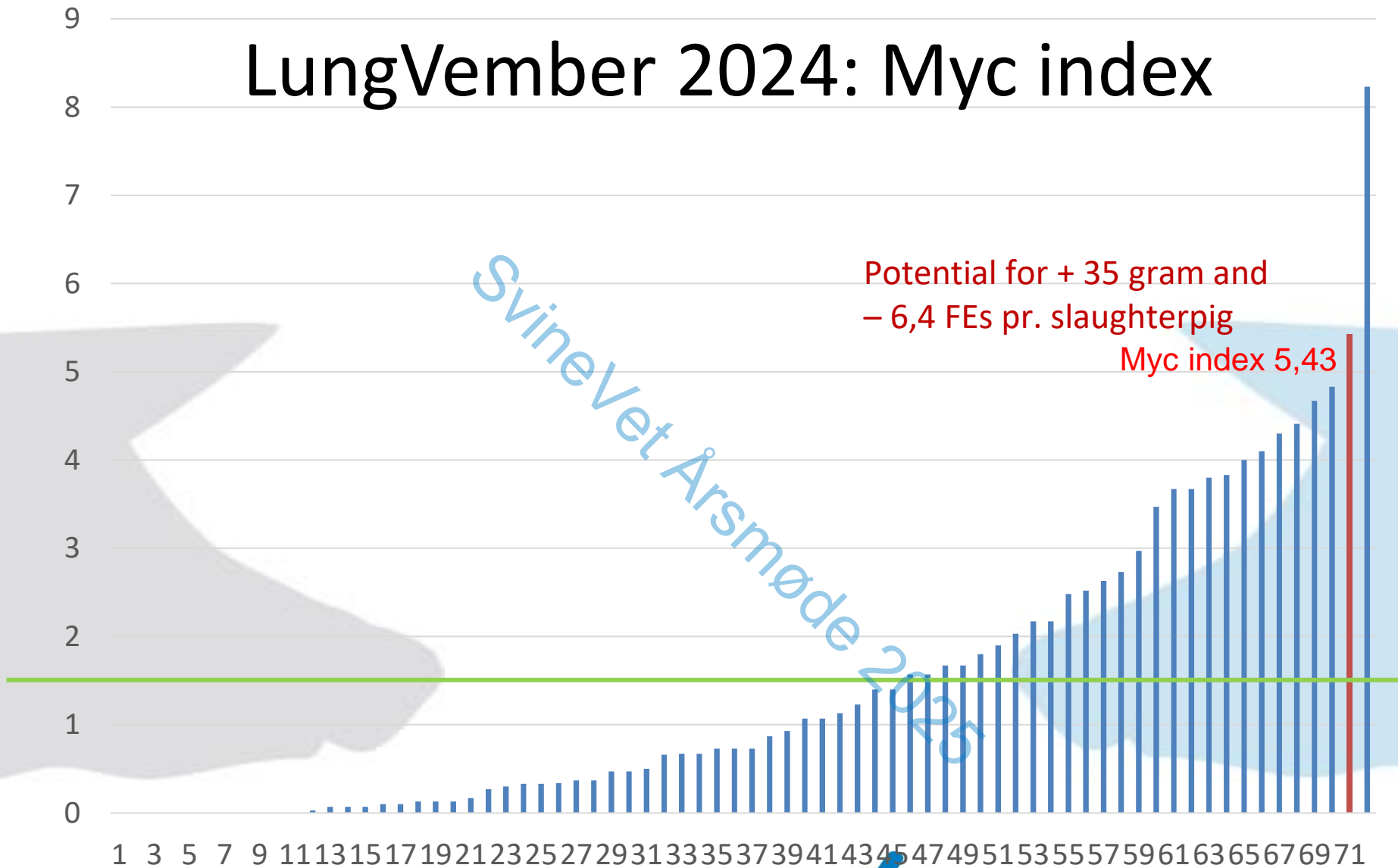
Land
Mykoplasma/EP indeks



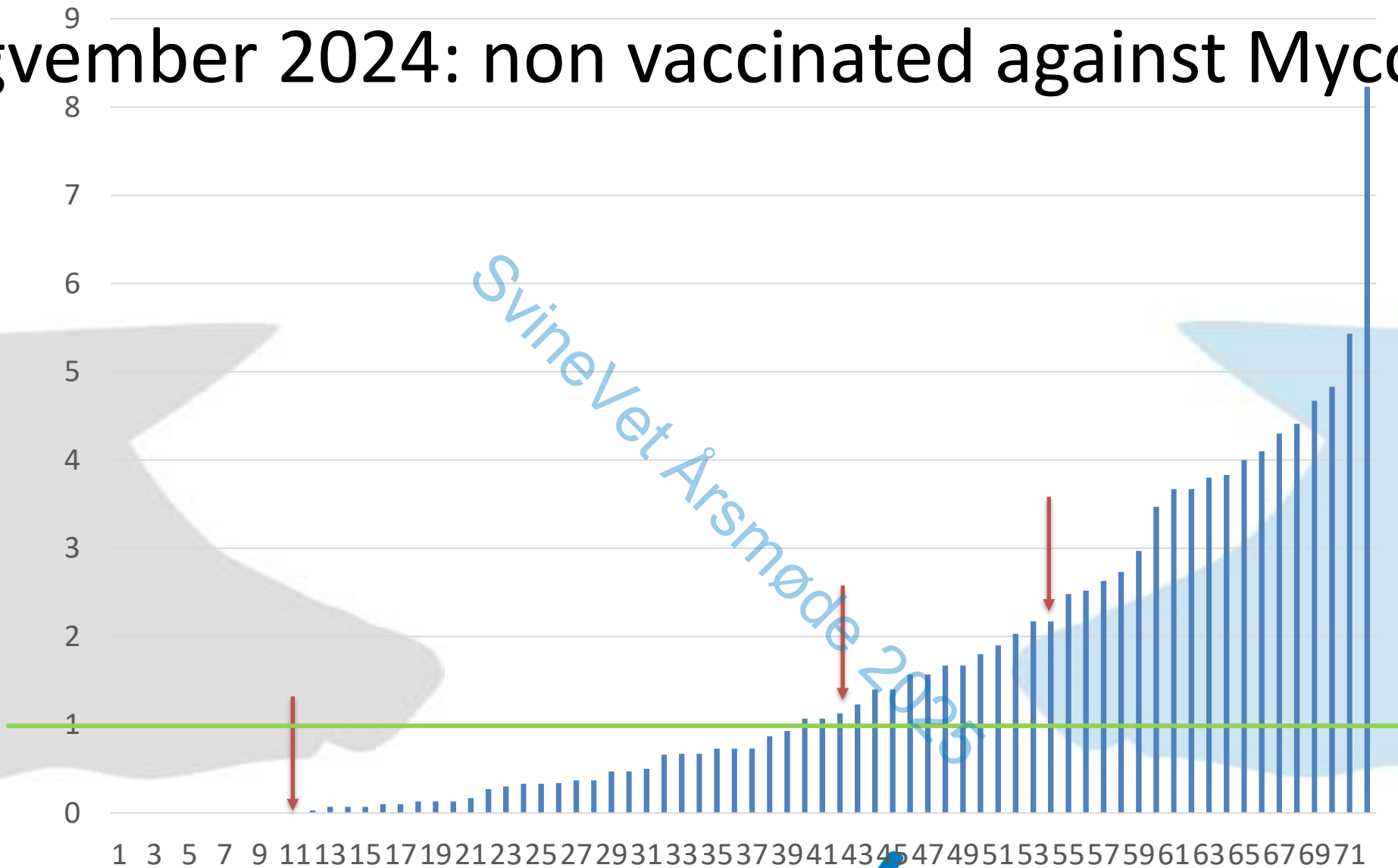
LungVember 2024: Mycoplasma index



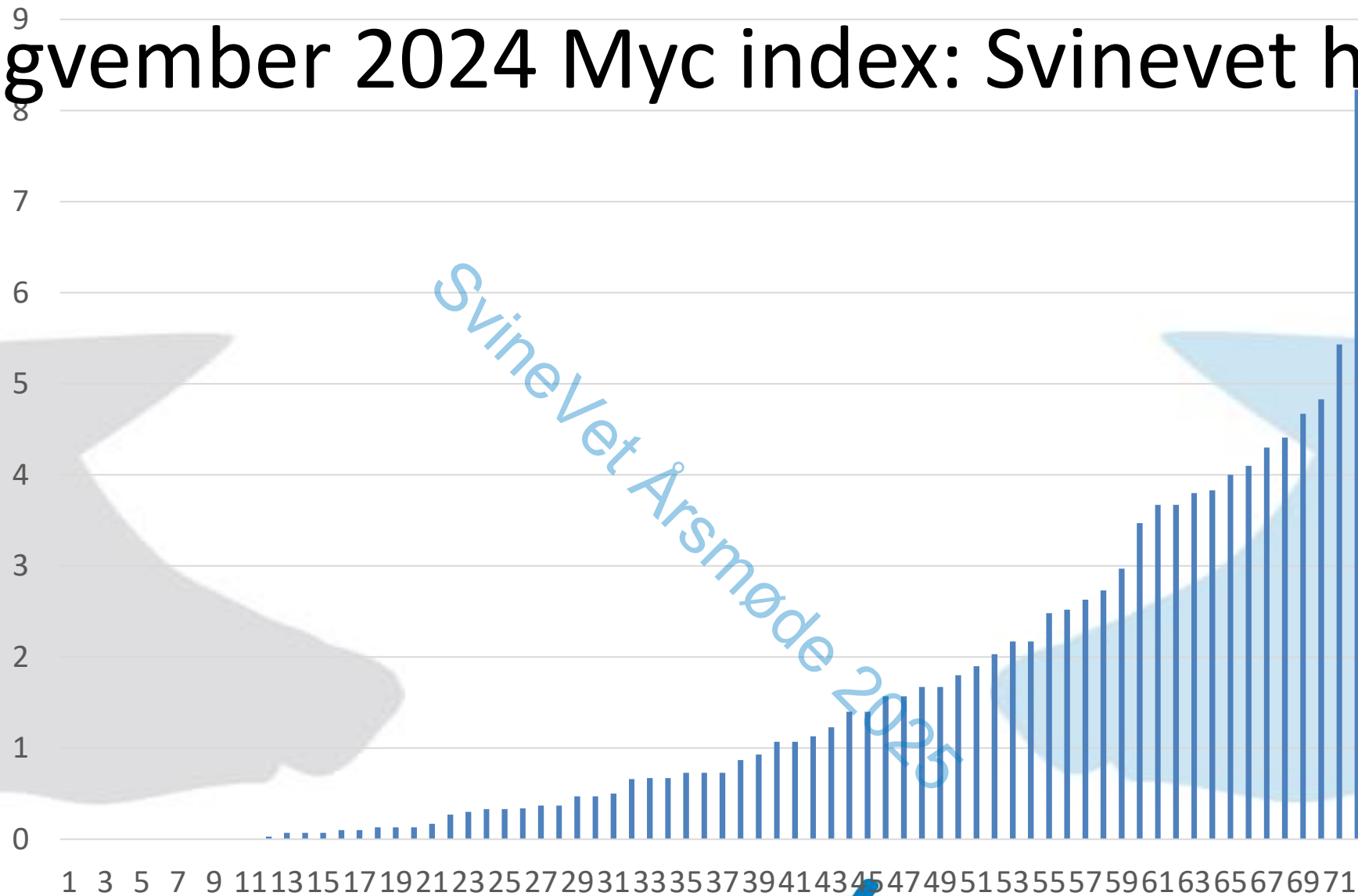
LungVember 2024: Myc index



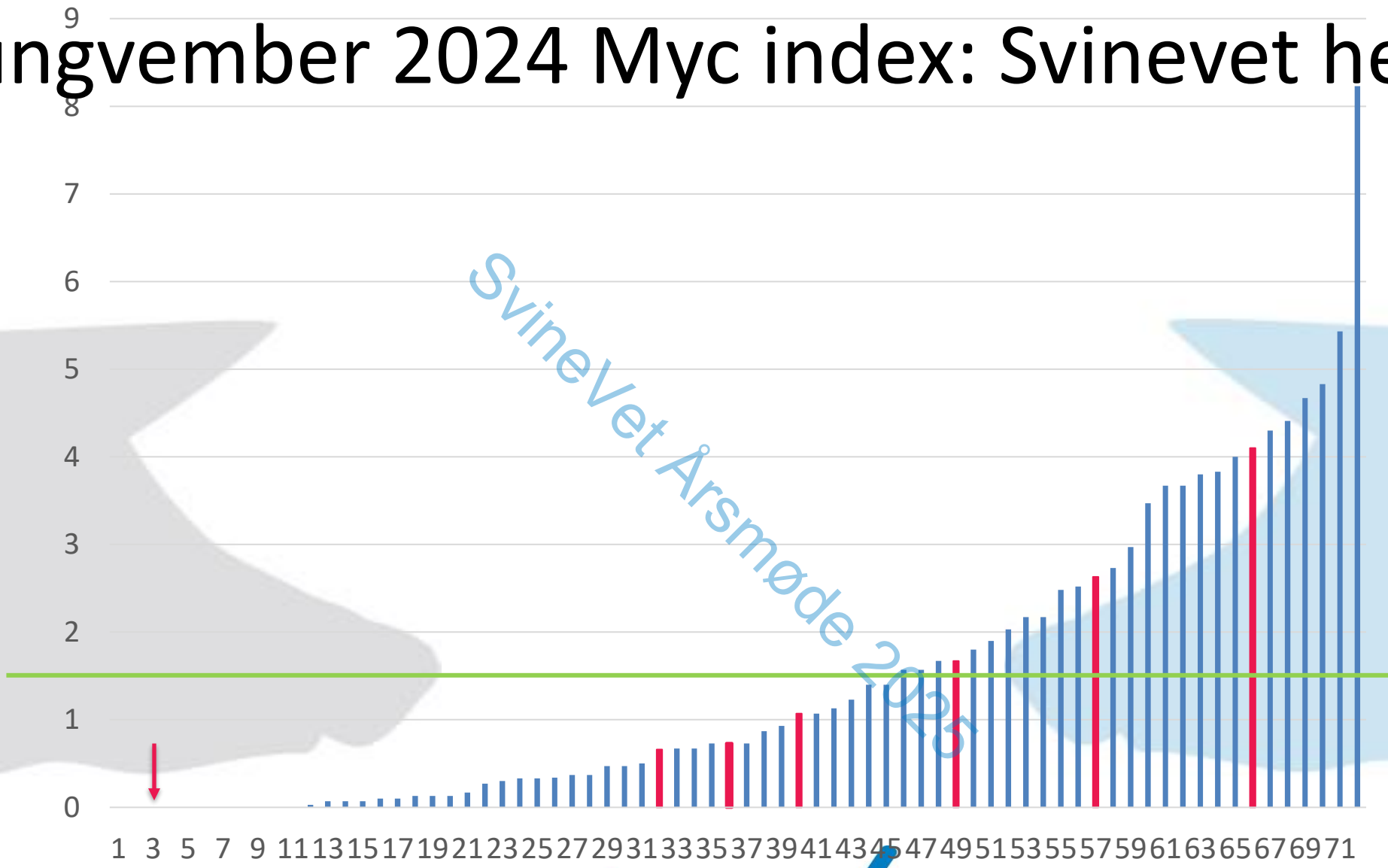
Lungvember 2024: non vaccinated against Mycoplasma



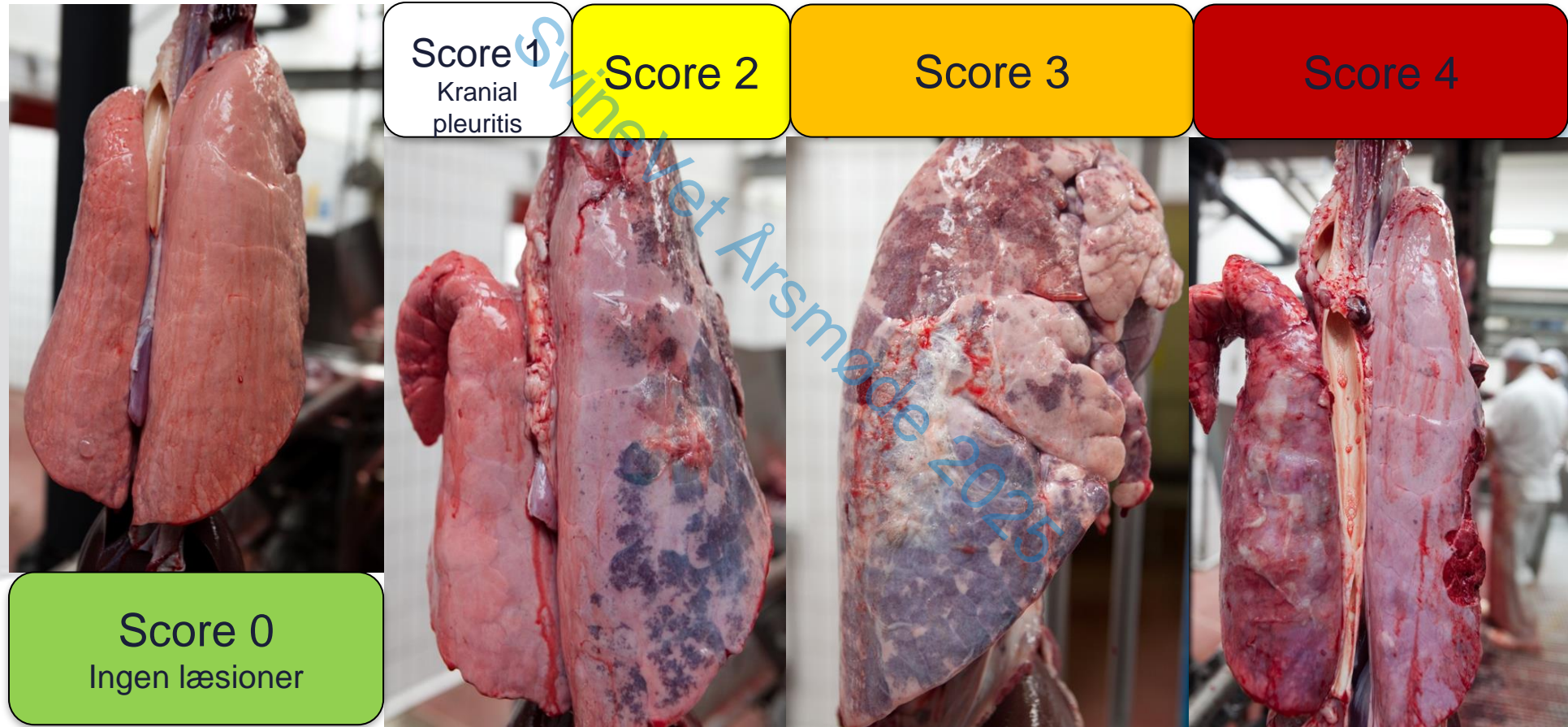
Lungvember 2024 Myc index: Svinevet herds



Lungvember 2024 Myc index: Svinevet herds



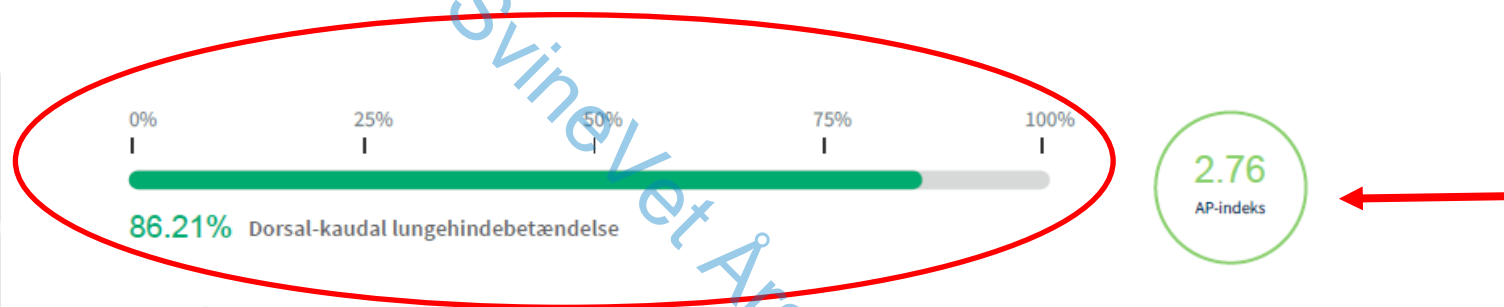
I LungVember CLP rapporter also describe the damage by AP via a score from 0 - 4



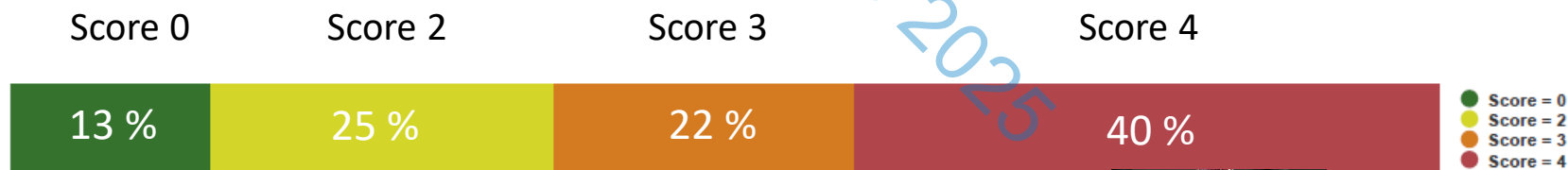
LUNGVEMBER

“The most unhealthy AP lungs in 2024”

4. AP-LIGNENDE FORANDRINGER



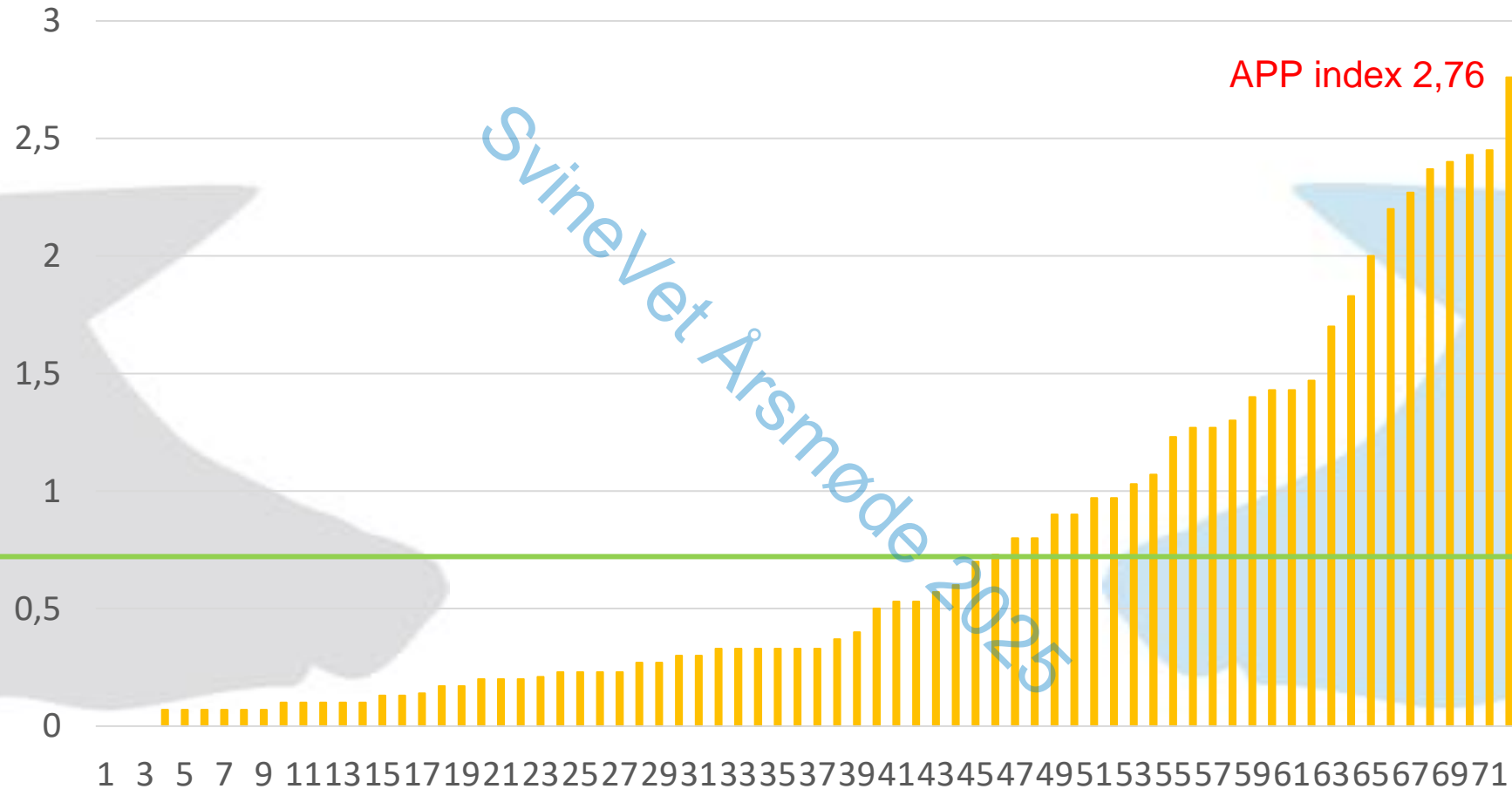
AP-lignende forandringer Fordelinger



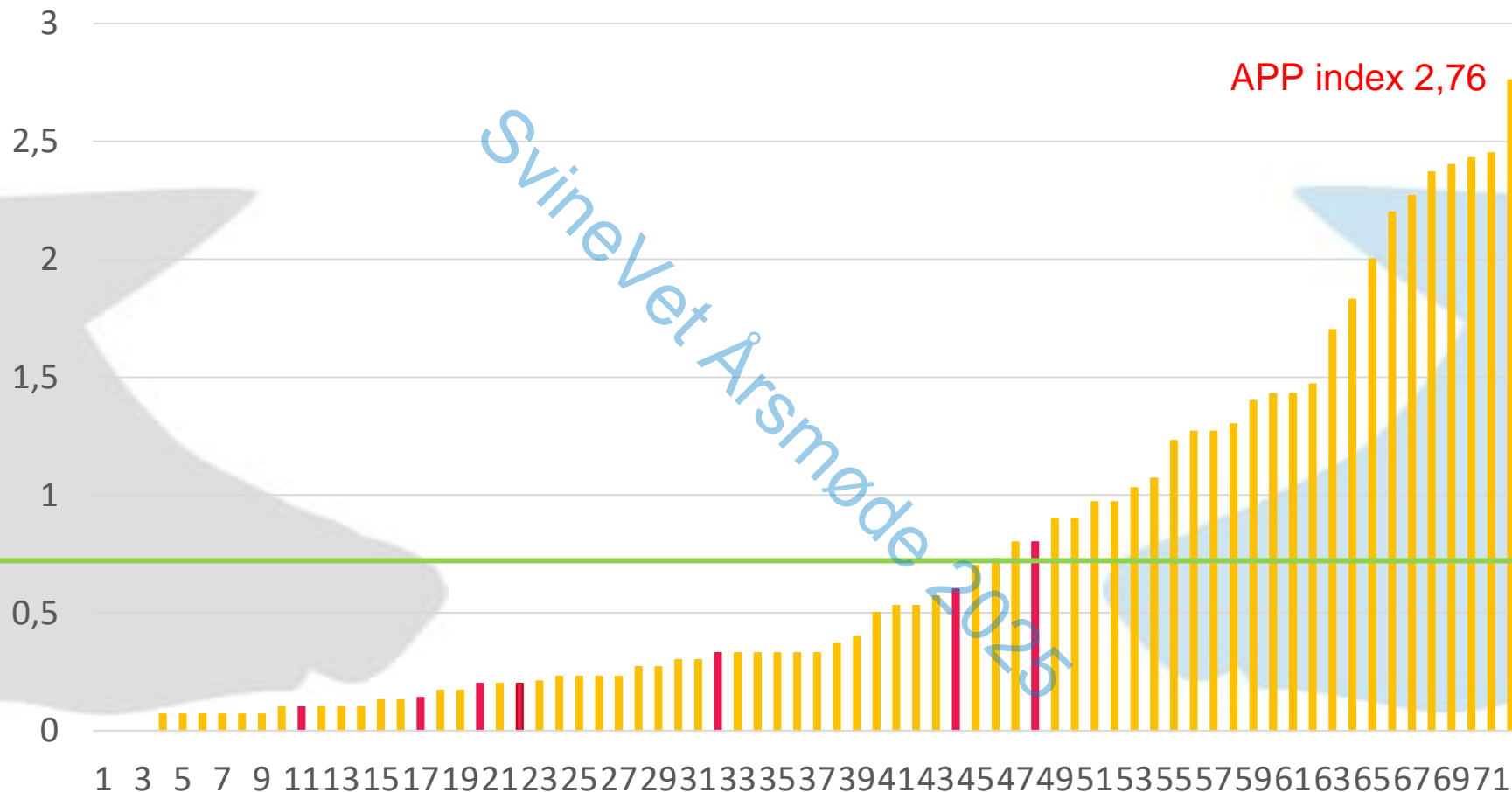
Vet
rådgivning



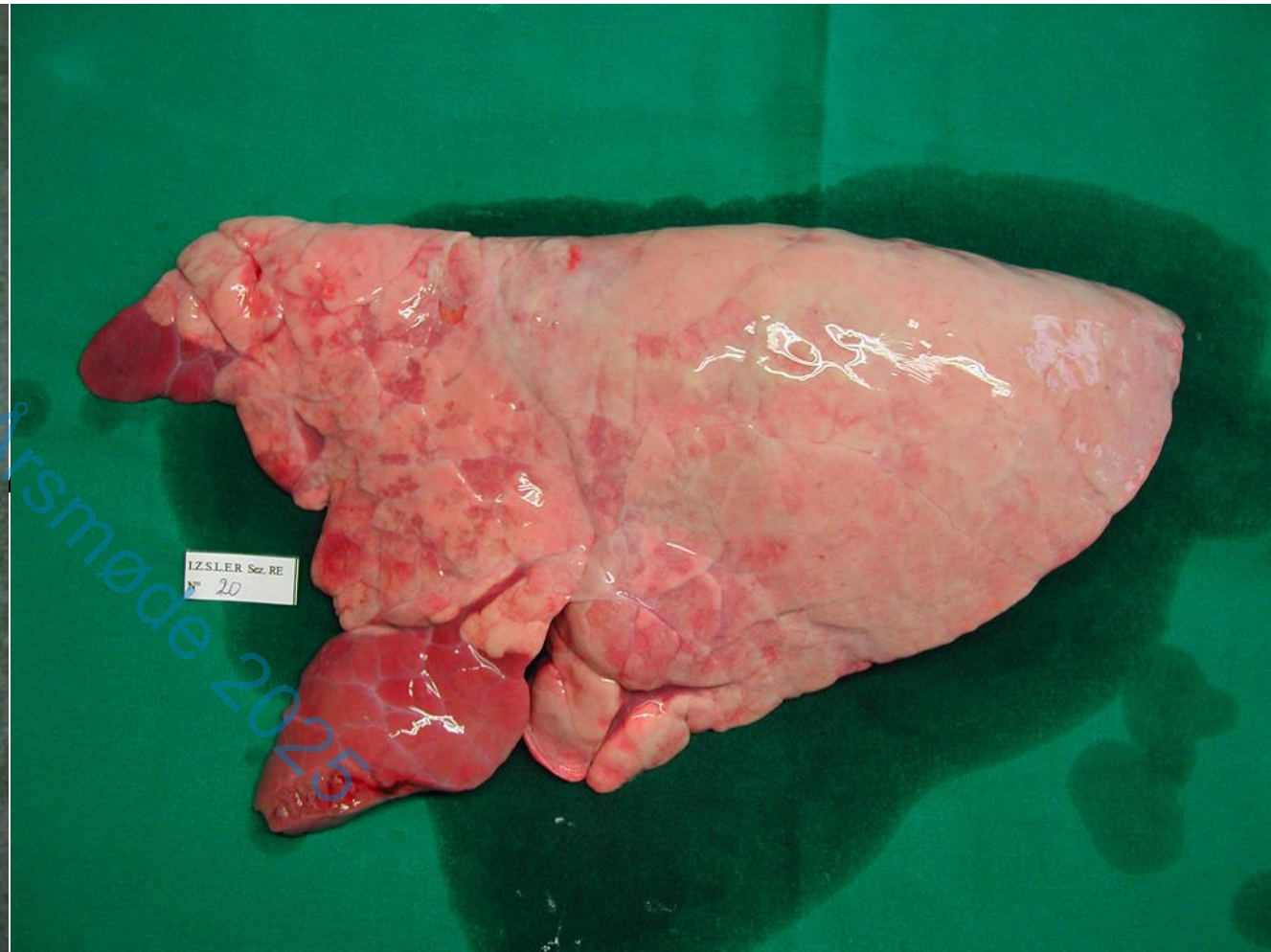
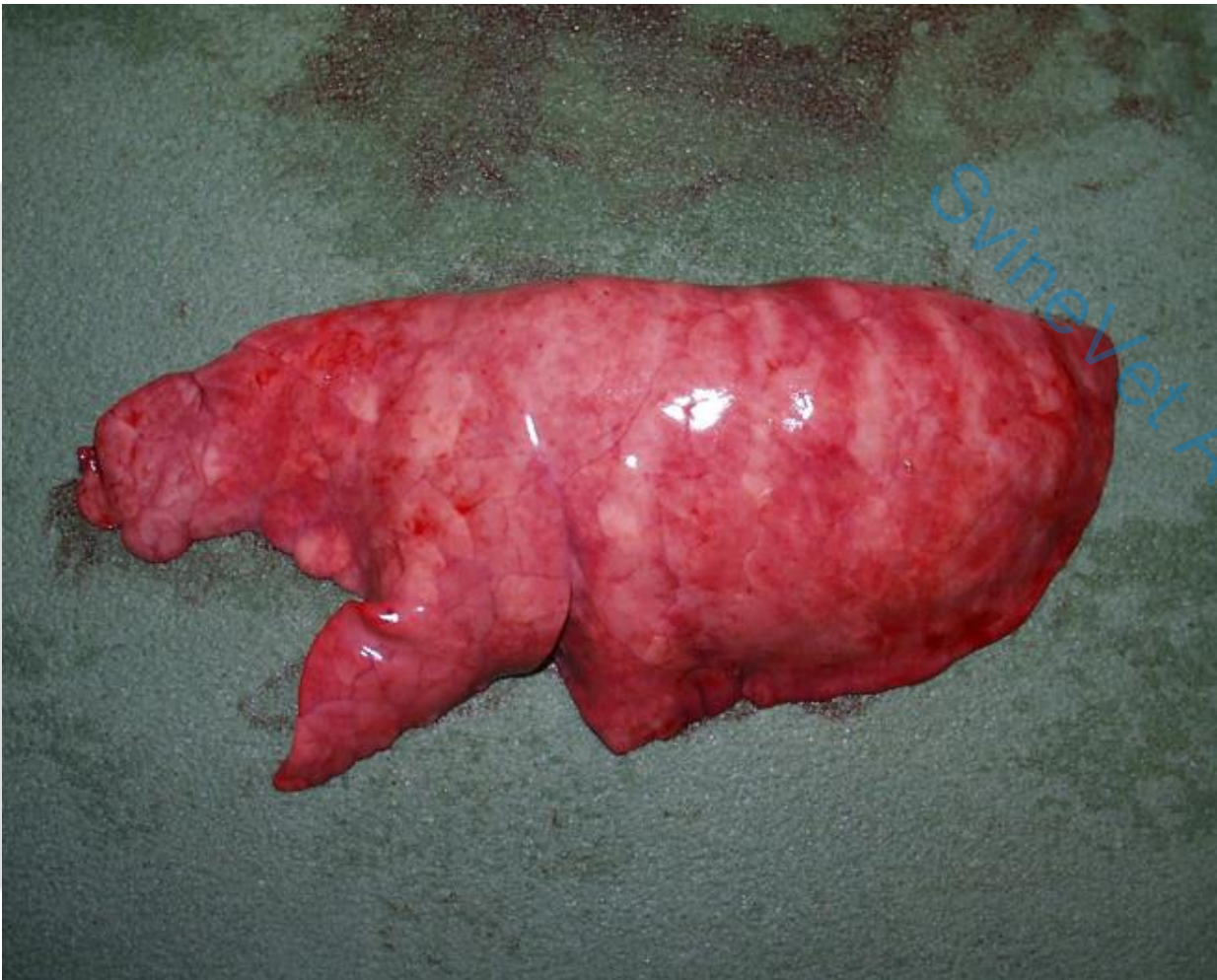
Lungvember 2024: AP index



Lungvember 2024 AP index: Svinevet herds



Why are PCV2 important when looking at healthy lungs?



PCV2 genotype study in Denmark 2014-2018 published in 2019



Støttet af:
Svineafgiftsfonden

FOREKOMST AF PCV2-TYPER I DANMARK

ERFARING NR. 1906

PCV2d findes i danske besætninger, den giver måske lidt flere kliniske symptomer end hidtidige PCV2-typer, som kureres ved korrekt PCV2-vaccination.

INSTITUTION: SEGES SVINEPRODUKTION, DEN RULLENDE AFPRØVNING

FORFATTER: CHARLOTTE SONNE KRISTENSEN, MICHAEL ALBIN LARSEN, CEVA, CHARLOTTE

KRISTIANE HJULSAGER, DTU (NU SSI), LARS E. LARSEN, DTU & KU

KØBENHAVNS UNIVERSITET
INSTITUT FOR VETERINÆR- OG HUSDYRVIDENSKAB



Provenr.	Provemærke	Dyreart	Materiale	Provebemærkning
1	2024-1316-19	Gris	Lunge/lymfeknude	
2	2024-1316-20	Gris	Lunge/lymfeknude	
3	2024-1316-25	Gris	Lunge/lymfeknude	

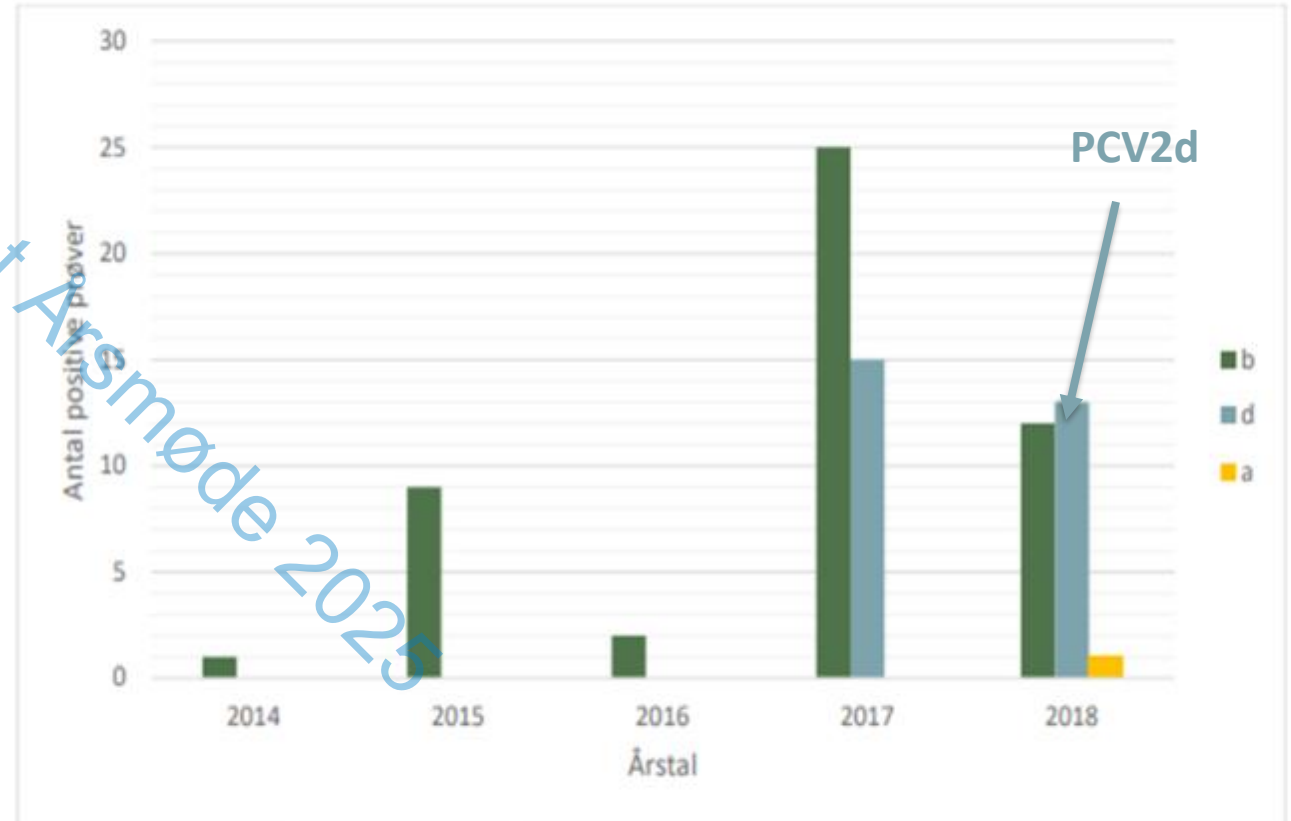
Sagsbemærkninger:

Der ønskes PCV2 sekventering for én prøve.

Resultat af sekvensanalyse:

Prøve KU-2024-151-1 (2024-1316-19) tilhører genotype PCV2d.

PCV2d



Figur 1. Fordelingen af PCV2 type a, b og d i årene 2014-2018

inevet

Professionel svinerådgivning



Important to take home from LungVember 2024:

- Lungvember enhance focus on lung health at slaughterpigs to improve production
- Based on Ceva Lung Program, which provide Myc index and AP index
- The extensions of Mycoplasma lesions can be calculated into a potential average daily weight gain and reduction of feed usage
- Slaughterpigs unprotected towards PCV2a, b og d are in risk of further lesions by Mycoplasma and AP
 - Therefore Mycoplasma vaccination should be combined by PCV2 vaccination